



AgileAgeingAlliance

AAA LEADERS FORUM

NEIGHBOURHOODS

FOR LIFE

12TH MAY 2026

NATWEST CONFERENCE CENTRE, 250 BISHOPSGATE LONDON

Presented by



In partnership with



ISO 25553

ISO 25553 is a landmark global standard for Smart Multigenerational Neighbourhoods, setting out a practical blueprint for healthier, more equitable places that better support people of all ages and abilities across the life course.

Enabled by the rapid mainstreaming of AI and digital connectivity, the framework is underpinned by clear governance, ethical practice and human oversight.

AGENDA

8.30AM **Registration light refreshments**

9.15AM **Welcome**

Nick Howe, Strategic Partnerships Manager, NatWest Accelerator; ISO 25553 Working Group Secretariat

Professor Ian Spero, Founder, Agile Ageing Alliance; Convenor, ISO 25553

Philippa Kellar, Director, Later Living, Bupa Care Services

Elizabeth Drury, CEO, Age UK London

9.45AM **A Minimum Standard of Living for the AI Age**

A call to action for the innovators and changemakers needed to bring ISO 25553 to life.

Alexandra Eavis, Vice Chair, techUK Health and Social Care Council

10.00AM **Neighbourhoods for Life: London Innovation Hub**

This session explores how London can help test, refine and advance ISO 25553 through open innovation, cross-sector collaboration and real-world testing.

Chair

Professor Ian Spero, Founder, Agile Ageing Alliance; Convenor, ISO 25553

Panellists

Elizabeth Drury, CEO, Age UK London

Lisa Wilson, Integrated Director of Commissioning – Adult Services, Greenwich

Ciara Campfield, Partner Stone King

David Orr, Chair, Clarion Housing Group



ISO 25553 Smart Multigenerational Neighbourhoods



11.00AM **Networking Break**

11.30AM **Rewiring Social Care**

Traditional models of care for ageing populations are no longer sustainable. Replacing people with technology is not the answer. ISO 25553 points towards a more transformative approach, in which foundational digital infrastructure helps connect homes, services, data and people more effectively in real time. This makes it possible to support earlier intervention, better coordination, and more personalised care closer to home. This session explores how that shift can be delivered in practice.

Chair

Nick Howe, Strategic Partnerships Manager, NatWest Accelerator; ISO 25553 Working Group Secretariat

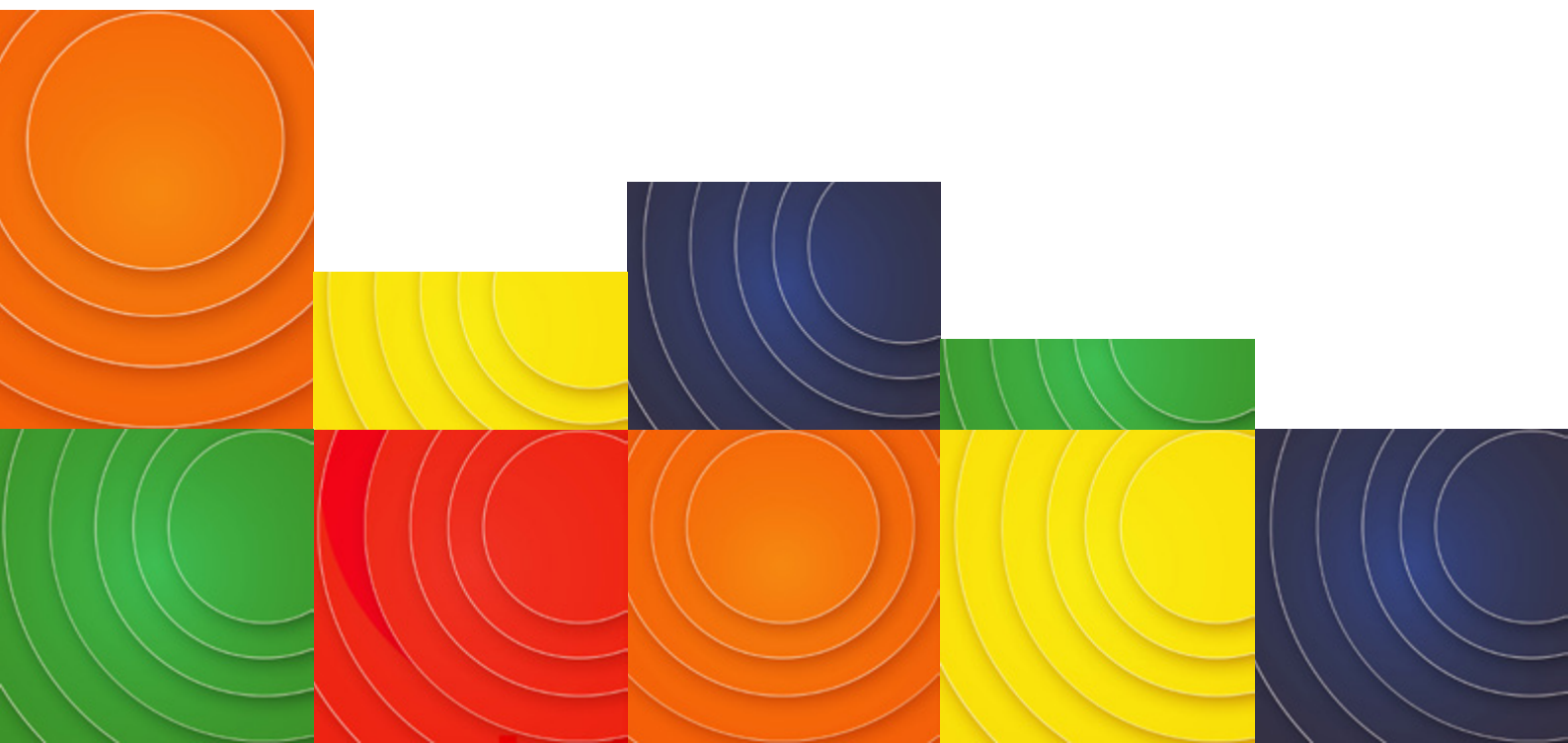
Panellists

Tommy Henderson-Reay, Chair, BCS Community of Practice for Adult Social Care; Digital Engagement Programme Manager, Digitising Social Care Programme, Joint DHSC/NHSE Digital Policy Unit

Alexis Edwards, Associate Partner and Clinical Safety Officer, IBM Healthcare Consulting UKI & EMEA

Nick Davies, Director of Health and Adult Services, Royal Borough of Greenwich

Professor Richard Harding, Development Manager, Science and Technology Facilities Council



12.15PM **Mobility, Access and Independence**

If support is to move closer to home, neighbourhoods also need to be easier to navigate, more inclusive and more responsive to the realities of everyday life. This session explores mobility and accessibility as essential enablers of independence, participation and neighbourhood-based care, shaping both user experience and the practical delivery of support.

Panellists

Paul Campion, CEO, TRL – The Future of Transport, in the UK, for the world

Fiona Jarvis, Co-Founder, Blue Badge Style

Gordon McCullough, CEO Research Institute for Disabled Consumers

12.45PM **Networking Lunch**



1.30PM

Reimagining Later Living

How do we move beyond age-segmented ‘retirement’ communities towards places that support continuity of living?

For too long, later living has been shaped around a limited set of choices: remain at home for as long as possible, then move between increasingly specialised settings as needs escalate. ISO 25553 challenges that model. It treats housing, care and community assets as interdependent components of a coherent neighbourhood system that adjusts around the person as circumstances evolve, enabling continuity without relocation, care without segregation, and support without loss of agency. This session explores what that means in practice for operators, developers, investors and communities.

Chair

Philippa Kellar, Director, Later Living, Bupa Care Services

Panellists

Matt Richardson, Design and Technical Director, McCarthy Stone

David Orr, Chair, Clarion Housing Group

Elizabeth Drury, CEO, Age UK London

Dr Evangelia Chrysikou, Programme Director, UCL Healthcare Facilities MSc

“For Bupa, ISO 25553 points towards a more connected and preventative future in which housing, care, health and community infrastructure work together to support people to live longer, healthier, happier lives with greater independence and dignity. We look forward to working with this community to help turn that vision into practical reality in the UK and across the wider settings in which we operate.”

Philippa Kellar, Director, Later Living, Bupa Care Services

2.30PM

Operationalising the Art of the Possible

Enabled by the rapid mainstreaming of digital connectivity, secure data exchange and artificial intelligence, ISO 25553 establishes a shared organising logic for neighbourhood-scale transformation. This session offers a first glimpse of how that logic can be translated into practice through a pioneering new operating system and architecture for more personalised support, prevention, earlier intervention, and better coordinated care closer to home.

Chair

Professor Ian Spero, Founder, Agile Ageing Alliance; Convenor, ISO 25553

Panellists

Dr Tim Ferris, Vice President of Healthcare Practice, InterSystems

Linda Chandler, Chief Digital Officer and Co-Founder, Spatial Sound and Guidance Company

Professor Azeem Majeed, Head of the Department of Primary Care & Public Health, Imperial College London; NIHR Senior Investigator

Introducing NOHA

Jon Payne, Director of Sales Engineering and Education, InterSystems

James Ormonde, Sales Director UK&I, InterSystems

“We can make prevention tangible in everyday life, using secure data and trusted AI in ways that are practical, scalable and grounded in real human need. ISO 25553 provides the framework to make that possible”

Dr Tim Ferris, Vice President of Healthcare Practice, InterSystems

3.30PM **Break**

3.45PM **Smart Multigenerational
Neighbourhoods: A New
Investable Asset Class**

The outcomes that matter most are also the hardest to measure. A hospital bed freed up can be counted. The fall that did not happen, the decline slowed early, or the confidence retained are much harder to evidence. As ISO 25553 Parts 2 & 3 move to implementation and evaluation, this session explores how shared metrics and a common evidence base can validate impact-focused investment and champion more resilient, sustainable delivery models capable of wider replication.

Chair

Jason Hardman, Executive Director – Head of UK Living Sector CBRE Advisory Services

Panellists


Dr Sandra Hamilton, Stone King; specialist in transforming public services

Caroline Haas, Head of Sustainable Finance Advisory, NatWest

Lee Whitehead, CEO, Smart Social Ltd

“The launch of ISO 25553 marks a pivotal moment for communities everywhere. If you care about delivery over theory, systems over silos, and impact over pilots, this is a movement worth leaning into. I strongly encourage anyone working across local authorities, housing, health, tech, finance, or research to get involved. This is how innovation becomes infrastructure.”

Barrie Davison, National Sector Head, NatWest and Royal Bank of Scotland



4.30PM

Gamechangers

Which innovations are best placed to improve lives and shape what happens next? This session is for those developing solutions with real-world potential and looking for a credible route into early testing, strategic partnerships and future investment. As the ecosystem around ISO 25553 begins to take shape, those who engage early will be best placed to help define it – and to benefit from the support, connections and momentum that follow.

The session will also help lay the groundwork for an innovation sandpit later this year.

Followed by a networking reception, giving innovators the opportunity to connect directly with customers, partners and investors.



Chair

Nick Howe, Strategic Partnerships Manager, NatWest Accelerator; ISO 25553 Working Group Secretariat

Panellists

Alexandra Eavis, Vice Chair, techUK Health and Social Care Council

Tom Jameson, Partner, CMS equip

Chris Sawyer, Innovation Lead BioMedical Catalyst Innovate UK

Howard Zieminski, Innovation Economy Relationship Manager, NatWest Venture Banking

5.15PM

Round up

Nick Howe, Ian Spero and Elizabeth Drury

Canapé and wine networking reception to 7.30pm



SPEAKERS



Ciara Campfield

Partner Stone King

Ciara is a lawyer and strategic adviser focused on helping organisations use commercial tools, legal structures, and purposeful governance to deliver genuine social impact. Her career has centred on the belief that business, public services, and civil society work best when they are aligned around mission, accountability, and public value. not just profit.



Paul Campion

CEO, TRL – The Future of Transport, in the UK, for the world

A broad-based leader with large corporate and small company board experience, Paul is interested in using innovation to build better companies and better lives. Skilled in understanding and communicating the transformational impact of technology on industry and society he has grown businesses and created and led teams, large and small, operating globally and locally.



Linda Chandler

Chief Digital Officer and Co-Founder, Spatial Sound and Guidance Company

Linda is on a mission to make digital technology part of the mainstream built environment in the next decade. Linda's most recent executive role as Chief Digital Officer at Olympia helped to re-imagine a former exhibition hall built in the Victorian era and future-proof it for the cyber-physical era. Before this she was leading Smart Cities for Microsoft in the UK and APAC for 12 years where she was at the forefront of enabling Microsoft to be a global leader in this space. Prior to Microsoft, Linda was CIO for the London Development Agency in the run up to the London Olympics.



Dr Evangelia Chrysikou, RIBA

Associate Professor, The Bartlett School of Sustainable Construction UCL. Program Director MSc Healthcare Facilities. Deputy Director of Enterprise BSSC

Associate Professor, Bartlett UCL, Founder – Programme Director MSc Healthcare Facilities. Architect RIBA – healthcare planner. Research funding: Horizon H2020, UKRI, Wellcome, British Academy, Sasakawa Foundation, Royal Society New Zealand, Onassis Foundation. Board Member, National Accessibility Authority, Greece. Consultancy and policy for: Greek Ministry of Health, Centre of European Constitutional Law, the EIPonAHA EU, Ministry of Foreign Affairs Japan, UK Government and the Reconstruction Mechanism of Peru, Dyson, etc. on healthcare planning, mental health, ageing and other public health topics. ULI Life Sciences and Healthcare Council Leadership Committee.

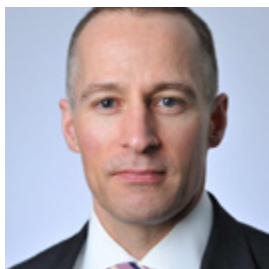


Nick Davies

Director of Health and Adult Services, Royal Borough of Greenwich

Nick has over seven years of experience within the Royal Borough of Greenwich. Prior to joining Greenwich, he held management roles at Harrow Council and served as Assistant Director of Adult Social Care at the London Borough of Waltham Forest.

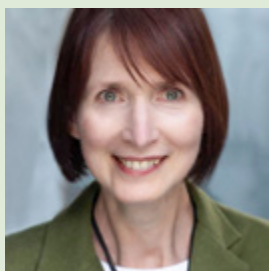
SPEAKERS CONTINUED



Barrie Davison

National Sector Head: Education, Healthcare Local Authorities and Charities. NatWest

Barrie is the Banks National Sector Head, responsible for driving strategic development and sustainable growth within for these critical sectors where the Bank provides ~£20bn of support. He is a prominent figurehead in industry, representing NatWest Group and the banking sector on key bodies and Task Force Committees providing thought leadership across a number of channels including academia, trade and Government. Barrie is passionate about the critical need for globally competitive healthcare, education and the broader public sector as the bedrock for a competitive and future fit economy. Graduating in Psychology, his three decade career has been spent with NatWest running various different businesses across front line coverage and credit.



Elizabeth Drury

CEO, Age UK London

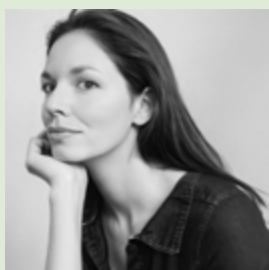
As CEO of Age UK London, Liz is committed to improving the lives of older Londoners through strategic campaigning and advocacy. Age UK London is a leading voice, focusing on inclusivity and empowerment for older individuals, championing their needs and driving meaningful change across London. Lead strategic communications, policy, and fundraising, driving a 45% increase in audience engagement through a digital framework. From 2017 – 2025 Liz was Head Of Communications, Policy, Fundraising for u3a, spearheading the charity's first UK-wide advertising campaign, boosting membership and strengthening post-COVID positioning.



Alexandra Eavis

Chief Product & Technology Officer, Genomics; Vice Chair, techUK Health and Social Care Council

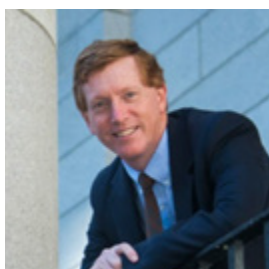
Alex has founded, run and successfully exited a number of her own data-informed technology companies in the health and care space; particularly focused on the application of emerging technologies and data science to complex healthcare problems. Alex is currently the Vice Chair and an elected member of TechUK's Health and Social Care Council and Vice Chair of the TechUK Life Science Working Group.



Alexis Edwards RN BSN, MBA

Associate Partner & Clinical Safety Office, IBM

Alexis Edwards is Associate Partner and Clinical Safety Officer at IBM, where she drives innovation at the intersection of healthcare and technology. As a clinician with deep expertise in clinical governance and digital transformation, Alexis leads on care orchestration—automating care pathways and integrating remote patient monitoring to ensure patients receive the right care at the right time, in the right place. Her work supports the development of intelligent digital infrastructure that senses, learns, and evolves—enabling safer, more inclusive neighbourhoods powered by data, AI, and human-centred design.



Dr Tim Ferris

Vice President of Healthcare Practice, InterSystems

Dr. Ferris served as President of Healthcare at Red Cell Partners, a technology incubator and investment firm. Previously, he was the National Director of Transformation at England's National Health Service (NHS), as well as CEO and Chair of the Massachusetts General Physicians Organization and Senior Vice President for Population Health at Mass General Brigham.



Dr Sandra Hamilton

Stone King; specialist in transforming public services

Dr Sandra Hamilton, leads the Transforming Public Services Consultancy at Stone King; Canada's First Social MBA: Government Advisor specializing in Responsible Management, Strategic Procurement, Socially Responsible Public Procurement (SRPP), and in designing Public Sector Social Innovation and Circular Economy strategies.



Caroline Haas

Head of Sustainable Finance Advisory, NatWest

Caroline leads NatWest's Sustainable Finance team working across the Commercial and Institutional franchise to provide advice and support to corporate, institutional and commercial customers throughout the lifecycle of their climate and sustainability journeys, providing a holistic advisory service across NatWest's product suite.



Professor Richard Harding

Development Manager, Science and Technology Facilities Council

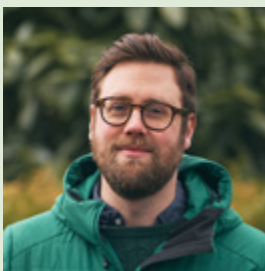
Richard is a seasoned R&D leader with over 20 years of experience and demonstrated success in delivering results through creating technology strategies, initiating new programs, building cross-organization collaborations and driving execution. He has a unique ability to reinvent himself and adapt to different technology fields and cultures.



Jason Hardman

Executive Director – Head of UK Living Sector CBRE Advisory Services

Jason has worked for CBRE for almost twenty years, holding various positions in its valuation business, most notably leading the living valuation team. In his newly created role, Jason is responsible for driving growth for CBRE's living sector by connecting all areas of its residential business.



Tommy Henderson – Reay

Chair, BCS Community of Practice for Adult Social Care; Digital Engagement Programme Manager, Digitising Social Care Programme, Joint DHSC/NHSE Digital Policy Unit

Tommy is the Principal Social Worker for the Digitising Social Care programme across DHSC and NHS England, with over 15 years of experience in health and social care across local authorities, the NHS, and the not-for-profit sector. He focuses on driving digital transformation in adult social care, ensuring both people and professionals have the skills to engage with technology. Tommy is also a trustee for Grow UK, a youth charity, and leads the British Computer Society's social care community of practice. Outside work, he enjoys sport, music, and food."



Nick Howe

Enterprise Team, Manager, Diversity in Business, NatWest Group

Nick Howe has spent 31 years working with businesses at various stages of their journeys for NatWest and as a result is in prime position to pass on the insights of what works and what doesn't to the next generation of founders coming through. Nick has been a particularly passionate supporter of the Agile Ageing Alliance dating back to its inception in 2015. For the past 3 years Nick has also been serving as ISO 25553 Working Group Secretariat.

SPEAKERS CONTINUED



Tom Jameson

Corporate Partner, CMS

Tom is a corporate partner at global law firm CMS, specialising in technology. He is ranked in Chambers (Private Equity: Venture Capital Investments, 2025) and Legal 500 (M&A: 750m +). As part of his practice, he helps technology businesses scale, guiding them through M&A, fundraisings and globalisation. He is one of the founding members of CMS' award winning legal accelerator CMSequIP, which focuses entirely on scaling young tech businesses. He is a member of the WG7, supporting Ian Spero and the team on the preparation of ISO 25553: Smart Multigenerational Neighbourhoods.



Fiona Jarvis

Co-Founder, Blue Badge Style

Fiona champions the message that style and disability are not mutually exclusive and she now leads a growing movement that is reshaping how accessibility is experienced, celebrated, and recognised.



Philippa Kellar

Director, Later Living, Bupa Care Services

Experienced Managing Director with a demonstrated history of working in the hospital & health care industry. Skilled in Operational Management, Healthcare Consulting, Emergency Medicine, Management, and building teams.



Professor Azeem Majeed

Head of the Department of Primary Care & Public Health, Imperial College London; NIHR Senior Investigator

Professor Azeem Majeed is an eminent academic and clinical leader, currently serving as the Head of the Department of Primary Care & Public Health at Imperial College London, a role he has held since 2004. In addition, he is a distinguished NIHR Senior Investigator, a prestigious position he was reappointed to in March 2025. Alongside his academic responsibilities, Professor Majeed continues to practice as a General Practitioner in South London (specifically Clapham) and serves as an Honorary Consultant in Public Health for the Imperial College Healthcare NHS Trust.



Gordon McCullough

CEO Research Institute for Disabled Consumers

Gordon is an experienced Chief Executive with a demonstrated history of working in the non-profit organization management industry. The Research Institute for Disabled Consumers is the leading expert in user-centred research involving disabled and older people. Founded by Which? RiDC is an independent, national charity with over 50 years' experience of commissioned research.



Professor Washington Yotto Ochieng, CBE, EBS, CEng, FREng

Head of the Department of Civil and Environmental Engineering, Imperial College London

Head of the Department of Civil and Environmental Engineering and Director of the Centre for Active Resilience and Security at Imperial College London. Award-winning researcher and educator infrastructure resilience, trans-modal user-centric mobility, and positioning, navigation and timing. Chartered Engineer, Fellow of the Royal Academy of Engineering, President of the Royal Institute of Navigation, Member of Board of Trustees of the Science Museum Group and Chair of the Advisory Board of the Science Museum. Scientific advisory roles at the Department for Transport, National Physical Laboratory and Foreign, Commonwealth and Development Office.



James Ormonde

Sales Director UK&I, InterSystems

James help organisations unlock the true value of their data to overcome their most critical challenges.



David Orr CBE

Chairman, Clarion Housing Group

A highly acclaimed inspirational leader with over 30 years' experience in Chief Executive roles, most recently at the National Housing Federation, having previously served as Chief Executive of the Scottish Federation of Housing Associations. David currently Chairs Clarion, together with the Canal and River Trust and co-Chairs #Housing 2030, a joint Housing Europe and UNECE study on affordable housing. A previous President of Housing Europe and a highly-regarded commentator and blogger, David excels in navigating the sometimes opaque world of politics and government.



Jon Payne

Director of Sales Engineering and Education

Commenced work as a software developer for the NHS in 1979. Since worked in healthcare and financial services – including running his own consultancy – before joining InterSystems in 2003. led the introduction of InterSystems Integration and Shared Care Record platforms into the NHS, as well as being actively involved with H7 UK, IHE UK, the PRSB and was a founder of INTEROpen. Jon had been engaged with techUK in the Digital Assets, Healthcare, AI and Cloud domains. Current areas of interest include Interoperability, AI driven analytics, Citizen owned data and Digital Assets.



Matt Richardson

Design and Technical Director, McCarthy Stone

Matt, a qualified architect, has dedicated his career to residential design – from large urban extensions to small house extensions. Over the past decade, he has focused on enhancing the design, supply, and quality of housing for older individuals in his role at McCarthy Stone. A pivotal aspect of Matt's responsibilities involves developing and managing the company's design and technical standards. He passionately champions the vital role that older people play in our communities and advocates for their well-being and inclusion.

SPEAKERS CONTINUED



Chris Sawyer

Innovation Lead BioMedical Catalyst Innovate UK

A high achieving team orientated business manager with extensive international and domestic product marketing and project management experience developed working for market leading medical device manufacturers.



Professor Ian Spero

Founder: Agile Ageing Alliance (AAA)

An Honorary Professor at the UCL Bartlett School for Sustainable Construction, Ian is founder of the Agile Ageing Alliance (AAA), an international network of more than 2,000 cross-sector stakeholders. Operating at the cutting edge of R&D, Ian also serves as a Monitoring Officer for Innovate UK, the government's innovation agency, supporting the development and commercialisation of game-changing solutions. A regular contributor to conferences, seminars, anthology and academic papers, Ian has received multiple awards and commendations across a distinguished career.



Lee Whitehead

CEO, Smart Social Ltd

Lee designs and delivers social impact products/services that transform tough social problems. He comes up with new ways to work across justice, health, social care, employment and housing. Lee does this by developing services that are more efficient, more inclusive, tackle root-causes and can show real social and economic gain because they reduce need.



Lisa Wilson

Integrated Director of Commissioning – Adult Services, Greenwich

Appointed in 2022, Lisa oversees the Health and Adult Services Directorate, managing the quality, sustainability, and commissioning of adult care, including market shaping and key duties under the Care Act 2014. She leads the integrated commissioning approach between the Council and NHS South East London Integrated Care Board and plays a key role in developing the Greenwich Mental Health Alliance and mental health service, including mental health direct awards and vision implementation.



Howard Zieminski

Innovation Economy Relationship Manager, NatWest Venture Banking

With 15+ years' experience across commercial and corporate banking, Howard supports the innovation economy by bringing clarity to complexity, translating ambitious missions into bankable solutions and connecting the right people across the ecosystem, from VC funds to credit and product partners.



AgileAgeingAlliance

NEIGHBOURHOODS FOR LIFE

CREATING A BRIGHTER FUTURE FOR OUR OLDER SELVES